



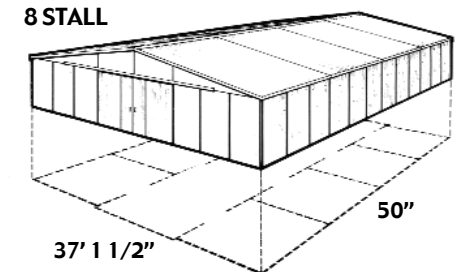
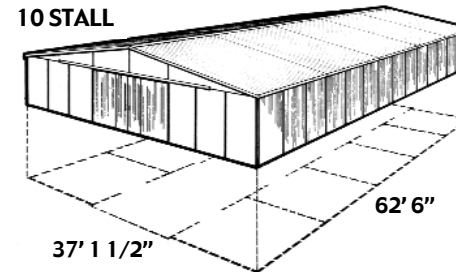
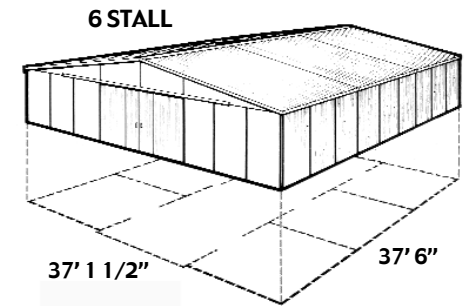
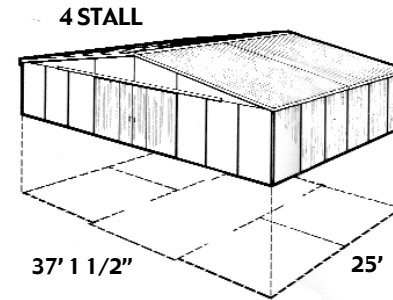
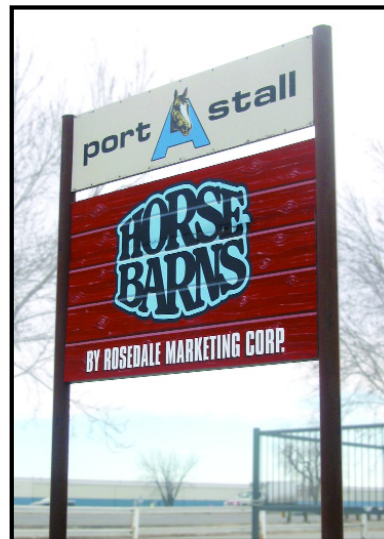
Rosedale Marketing Corporation is a small family owned and operated Colorado Corporation. Since 1971 Rosedale has manufactured the Port-A-Stall horse barn. For 19 years the manufacturing was in Berthoud, Colorado and continues now at its current location in Erie, Colorado. Rosedale also manufactures a full line of modular stalls, doors, corral panels and other barn components. Rosedale Marketing Corporation is licensed and is fully insured.

All aspects of the horse barn from ordering the raw materials, manufacturing or selling and shipping the product is done here at Erie location by a family member. There are no outside sales people or distributors; therefore, you are buying the product factory direct.

The owner can choose to assemble their barn at their location or have Rosedale's installation crew do the work. All buildings are engineered with the required wind and snow loads for your location. Blue prints are always included with the purchase of a horse barn.

Optional color choices are available; as well, as finishes. The bottom of each wall panel is sealed with a silicone inside and out. A sealant on the interior of the bottom of the stall walls is also recommended.

We are proud of our products and continuing customer service. Please call or email for costs and more information.



We are NOT limited to these sizes or designs.

Basic buildings have a 12' center aisle with a three in twelve roof pitch and a one foot overhang. The standard stalls are 12' 6" x 12' 6" with one sliding interior door and deluxe feed door. Each sliding door has steel bearing door rollers. One large pair of sliding breezeway doors on each end of the building. Three inch fiberglass insulation with vinyl backing is included in the ceiling in every standard basic building. Larger center aisles and stalls are available.

Our Port-A-Stall barn wall panels are made of true 3/4" plywood laminated with 24 gauge galvanize steel on the interior of the stall walls and optional products on the exteriors. All edges of this plywood are sealed with two coats of paint before it is actually laminated.

Using galvanize steel makes it impossible for the horse to chew on wood. This panel wall has a warranty that it is 'kick proof', and that a horse cannot kick all the way through the materials for the life of the building!



303.678.7838

[www.rosedalemarketing.com](http://www.rosedalemarketing.com)